



The Business 40 Improvement Project includes the reconstruction of a 1.2-mile section of Business 40 through downtown Winston Salem from 4th Street to just east of Church Street, including 9 vehicular bridges and 2 pedestrian bridges.

After many years of planning, the North Carolina Department of Transportation, or NCDOT, has begun construction! The following presentation walks you through the details of this most important project.

Today's Presentation

- **Contractor and timeline**
- **Construction Segments A-D**
- **Construction News**
- **New Traffic Patterns**
- **Bridge designs**
- **Alternate ways around town**
- **Incident Management**
- **Other mobility options**
- **Contact information**



Building the Future **BUSINESS 40**



Design-Build Team

Flatiron Constructors, Inc./Blythe Development Company Joint Venture and HDR Engineering Inc.

- **Rebuild the 1.2-mile section of Business 40, which includes reconstruction of the roadway, 9 vehicular bridges and 2 pedestrian bridges.**
- **\$99.2 million.**
- **Increase speed limit to 55mph.**
- **Rename all of US 421/Business 40, "Salem Parkway".**

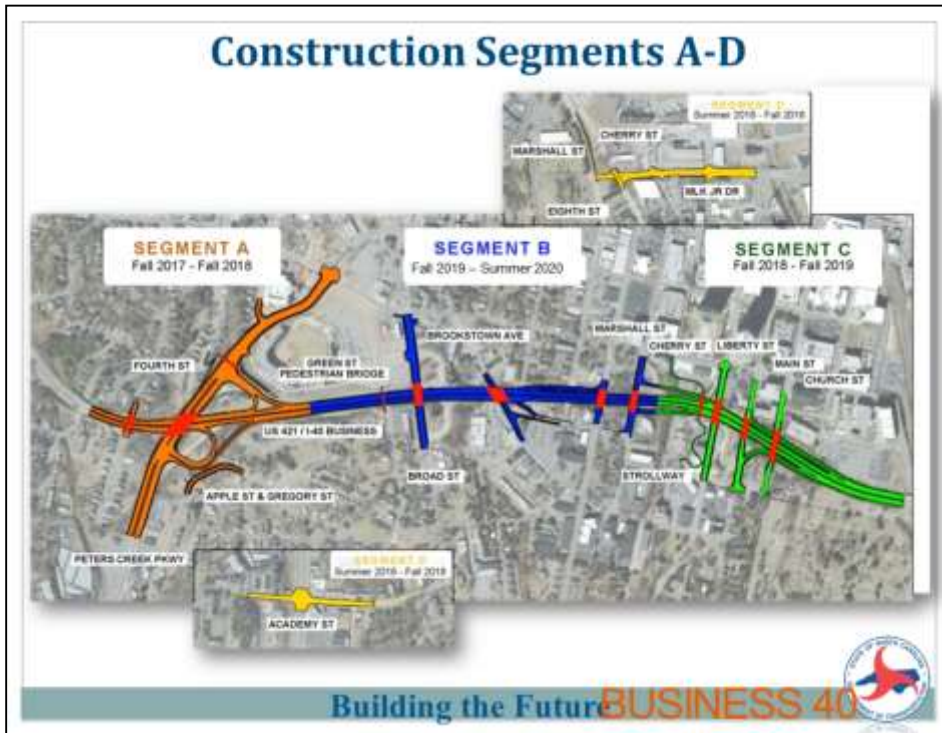
Building the Future **BUSINESS 40**



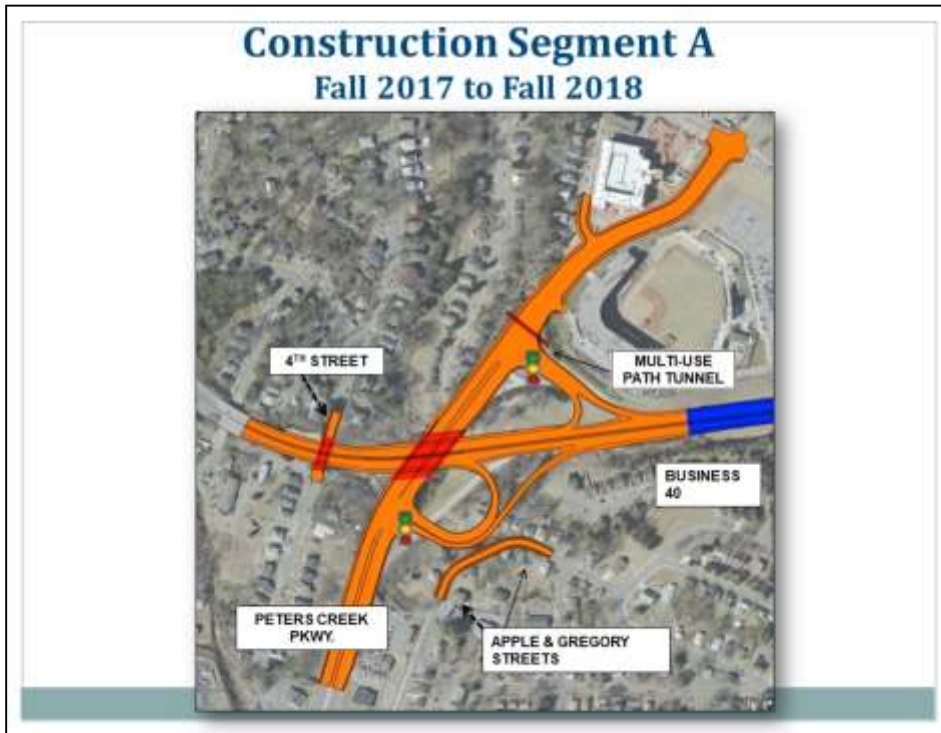
Flatiron Constructors, Inc./Blythe Development Company is the contractor, while HDR Engineering Inc. is responsible for final designs. The Team will rebuild Business 40 at a price tag of \$99 million. Once complete, the speed limit will be posted at 55mph rather than the current 45mph, and the entire US 421/Business 40 from the splits between Clemmons and Guilford county will be renamed, Salem Parkway.



As you can see from the timeline, we are at #4, the construction of Segment A (replacement of the 4th Street Bridge, Peters Creek Parkway bridge and interchange at Business 40 and other road improvements). The work on Business 40 continues until the entire project is completed in late 2020, or #9 on the timeline.



This map provides an overview of the project and shows you how the Design Build Team will construct the project in 4 segments and time frames. We will review each segment in detail, but first let's see what is currently happening to prepare for construction.



The construction of Segment A began on October 23, 2017 and will be completed in the Fall of 2018. It includes the following:

- Replacement of the 4th Street Bridge;
- Replacement and widening of the Peters Creek Parkway Bridge and interchange; and
- Connection of Gregory and Apple Streets in the southeast quadrant.

Another new feature of the project shown on this map will be the construction of a new Multi Use Path. The City of Winston-Salem will build the Path from Peters Creek Parkway to Liberty Street. The red line that you see on the north side of the interchange near BB&T Ballpark is actually a pedestrian tunnel that will be built under Peters Creek Parkway.

Once completed, Peters Creek Parkway will be a new 6-lane road from 1st Street to almost 4th Street, and include a new 7-lane bridge. Traffic signals will be located at the ramp entrances and exits.

Recent Construction News!

- Liberty Street is narrowed to two lanes between Business 40 and Cemetery Street for demolition of 2 buildings.



Be patient and proceed slow through construction zones.

Building the Future **BUSINESS 40**



Further, crews are demolishing two buildings on Liberty Street in preparation of future work (Segment C). Please be careful while driving, as Liberty Street is narrowed to two lanes during this time period.

Ongoing/Current Construction Work

- A new water line is being installed in 2-block segments on First Street between Church and Peters Creek Parkway.
- As of Jan. 18, 2018, all homes along Apple and Gregory streets and Westdale Avenue have been demolished.
- A retaining wall for the multi-use path is under construction along Westdale Avenue.
- Grading and drainage work is underway for the realignment of Apple and Gregory streets.



Building the Future **BUSINESS 40**



Water Line Map

1st Street from Church St. to Peters Creek Pkwy.



- Completed.
- Work on Marshall to Poplar Streets is currently underway thru January 2018.
- The next 2-block segment is from Poplar to Spring Streets.
- To be completed in 2-block segments beginning in 2018 .

*Work is being conducted in 2-block segments from east to west.
Updated January 16, 2018



This map shows the water line work in 2-block sections.

Traffic Patterns during Construction of Segment A

ON PETERS CREEK PARKWAY:

- Two lanes of traffic maintained in each direction.
- However, during construction, there will be some **nighttime (9PM - 6AM)** and **non-peak, daytime (9AM - 4PM)** lane closures on Peters Creek Parkway.
- Detour signs will re-route drivers around the construction site.

Traffic Patterns on Peters Creek Parkway Bridge during Construction

Phase 1 construction begins in October 2017

- Construct west side of Peters Creek Parkway bridge
- Maintain traffic on existing east side



Phase 2 construction begins after completion of Phase 1

- Construct east side of Peters Creek Parkway bridge
- Maintain traffic on the "brand new" west side



During construction, Peters Creek Parkway will remain open with two lanes of traffic in each direction. However, there will be some initial, temporary lane closures from 9:00 p.m. – 6:00 a.m. Monday through Sunday. There will also be some temporary inside lane closures underneath PCP on Business 40, which will be advertised in advance. Remember that these temporary lane closures are at the discretion of the contractor. If not needed, they will not install the closures.

Traffic Patterns during Construction of Segment A

ON BUSINESS 40 UNDER PETERS CREEK PARKWAY BRIDGE:

- Between 12 a.m. midnight to 6:00 a.m., **if needed**, eastbound traffic will be diverted up the exit ramp at Peters Creek Parkway, over Peters Creek Parkway, and down the on-ramp from Peters Creek Parkway.
- Will not implement if not needed, at contractor's discretion.



In addition to temporary lane closures, and if warranted, eastbound traffic will be diverted up the exit ramp at Peters Creek Parkway, over Peters Creek Parkway, and down the on-ramp from Peters Creek Parkway. This movement will only occur between 12 a.m. midnight to 6:00 a.m., **if needed**.

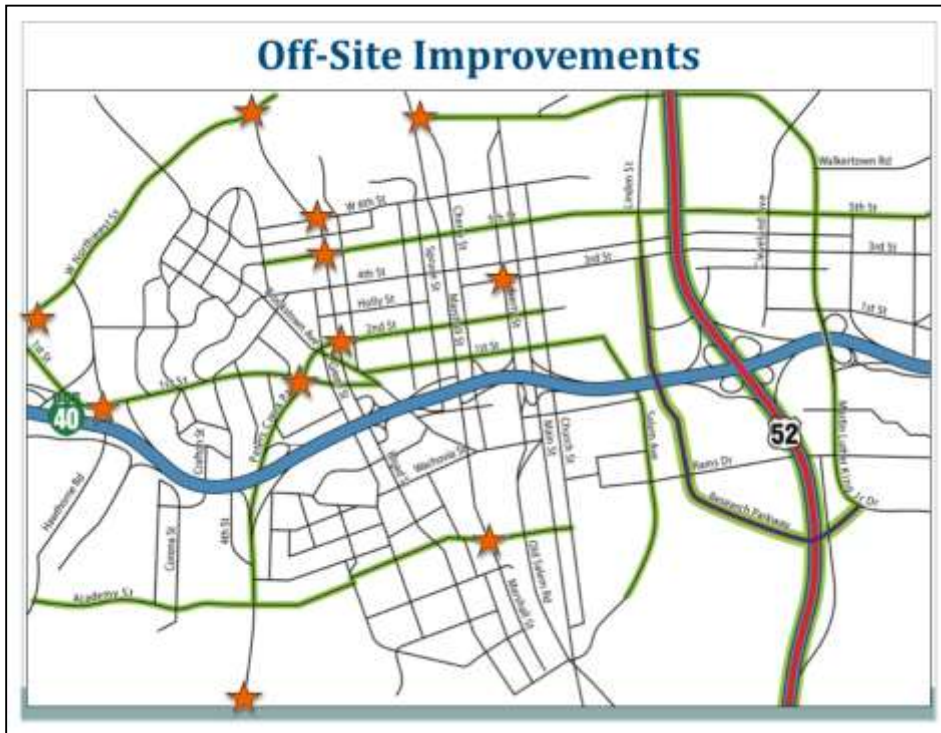
Construction Segment D Summer 2018 to Fall 2018



Beginning in summer 2018, Segment D work will begin, which includes the improvement of two local roadways.

NCDOT will widen Martin Luther King Jr. Boulevard / Eighth Street between Marshall and Trade streets to a 4-lane, divided road to match the existing 4-lanes east of Trade Street. Minor roadwork will be conducted on Marshall and Cherry streets as part of this effort.

NCDOT will also make improvements on Academy Street at the intersection of Peters Creek Parkway to help with traffic flow in that area.

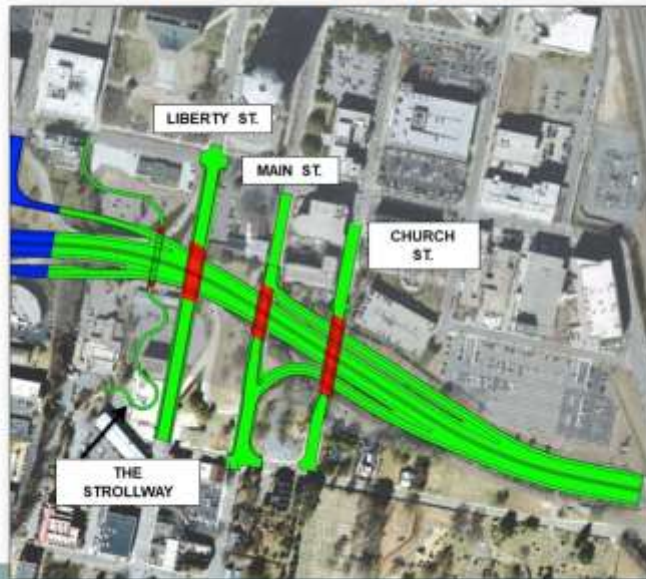


In addition to MLK, Jr. Drive and Academy Street, other temporary, off-site improvements will be made, as highlighted by the orange stars on this slide.

Most of these improvements include the addition of a left or right turn lane at intersections, which will be accomplished by re-striping the existing road. There will NOT be any right-of-way required; these are only temporary lanes that will go back to their original configuration once the overall project is completed. The purpose of these improvements is to help traffic flow during the closure.

All work in Segments A and D will be completed by the Fall of 2018.

Construction Segment C Fall 2018 to Fall 2019

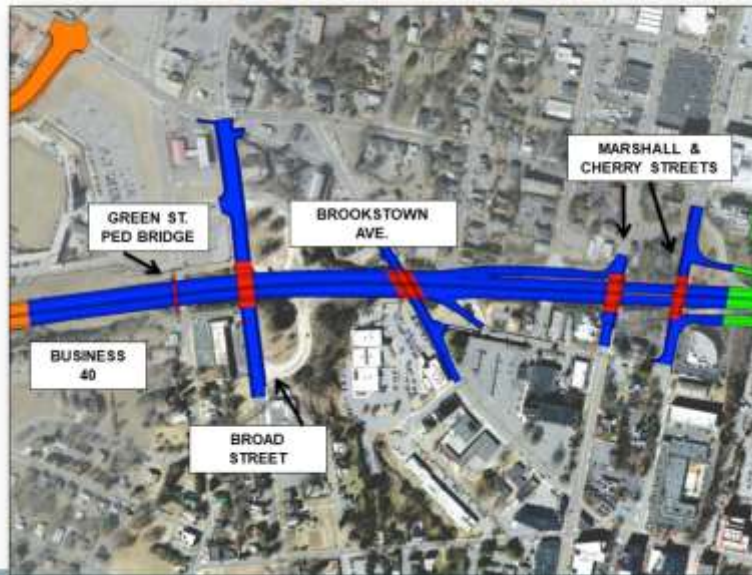


The first segment to be constructed after the completion of Segment A is Segment C, which includes everything you see in green on the map.

Starting from left to right, the Strollway will be built over Business 40 as a Pedestrian Land Bridge, complete with a 10-foot path surrounded by landscaping on both sides. Currently, the Strollway goes under Business 40.

Three vehicular bridges will also be replaced, including those on Liberty, Main and Church streets. The ramps on Main and Church Streets will be modified, while the ramps on Liberty Street will be removed to provide better movement of traffic on Business 40. One major change is that the new Liberty Street Bridge, which currently goes under Business 40, will now go **over** Business 40.

Construction Segment B Fall 2019 - Summer 2020



Following the completion of Segment C in the Fall of 2019, everything that you see in blue on the map will be reconstructed. Starting from left to right, the Green Street Bridge will be rebuilt as a pedestrian bridge to accommodate pedestrians in the surrounding neighborhoods and BB&T Ballpark. The Broad Street Bridge will be replaced, but the ramps to and from Business 40 will be removed. Continuing east, the Brookstown Avenue Bridge on Business 40 will be shortened. Note that Brookstown Avenue will continue to go under Business 40.

The High Street ramps will be modified to provide better access, but the Spruce Street Bridge will be removed permanently. Both Marshall and Cherry Street bridges and their ramps will be modified to create a new interchange using both streets. This will become the major interchange in downtown between Peters Creek Parkway and U.S. 52.

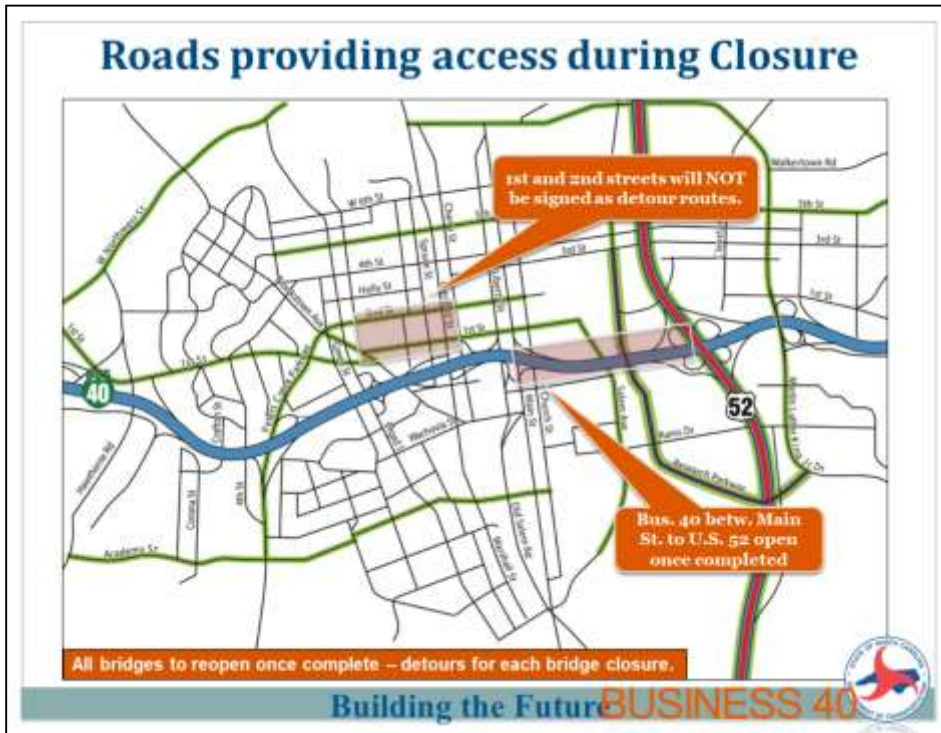
Notification During Construction

- **Early notification to News Media via Press Release.**
- **Message Boards on Business 40 in advance of lane closures.**
- **Notice to navigational apps., particularly WAZE.**
- **Postings on Social Media and Project Web Site.**
 - www.business40nc.com
 - @NCDOT_Triad #Biz40NC
- **NCDOT's Traveler Information Management System (TIMS) site at www.ncdot.gov , click on Travel and Maps, then click on TIMS.**

Building the Future **BUSINESS 40**



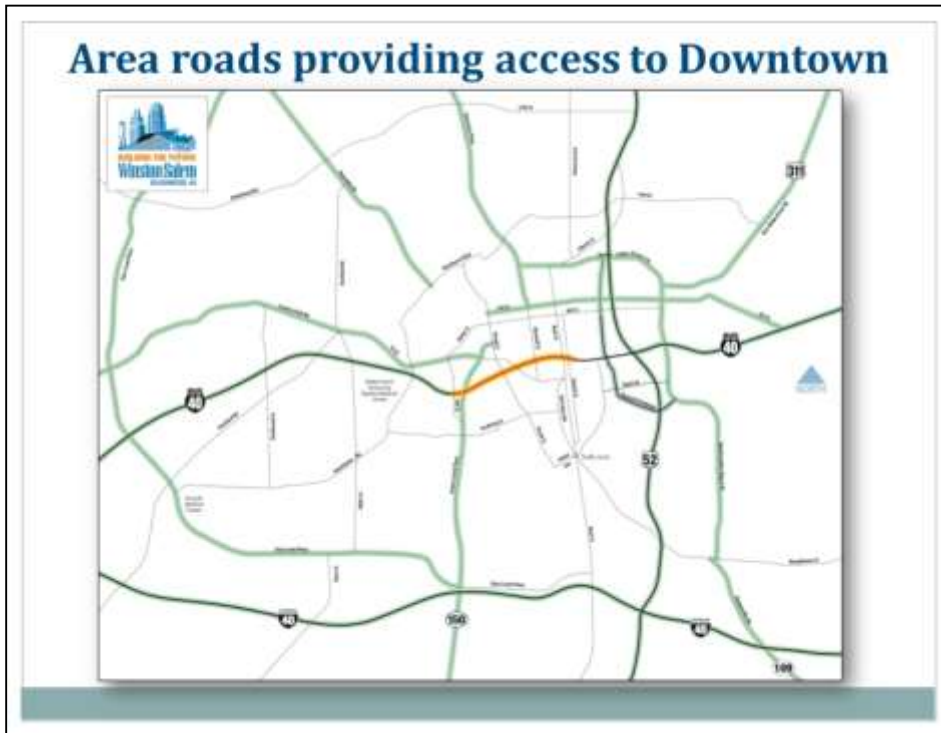
NCDOT will notify the public as much in advance as possible prior to any major lane or road closures, date changes or detours that will affect traffic patterns. We would also suggest that residents and travelers check the project website at www.business40nc.com and/or subscribe to Twitter (@NCDOT_Triad #Biz40NC). NDOT's TIMS maps, as shown on the web site above, can also be viewed to see live traffic.



While NCDOT will place detours on several major roads, like U.S. 52, I-40 and Peters Creek Parkway, among other local streets providing routes into downtown, local residents will likely “find their own way” in and out of downtown. For those folks, this map highlights roads in green that can handle the additional traffic forecasted during the closure. However, keep in mind that these roads will experience some congestion during the peak hours (approx. 7-9 a.m. and 4/4:30-6/6:30 p.m.).

It would be beneficial for residents to test a few different routes now so that you are prepared when Business 40 closes. It would also be helpful to build about 20-30 minutes into your travel time once the closure occurs, at least initially. And remember, Peters Creek Parkway will be open during the closure and will provide access into downtown from the west. Also worth noting:

- The new Research Parkway is now open, providing access into downtown from the east.
- U.S. 52 will also be open during the closure; drivers can access downtown via MLK Jr. Blvd and Research Parkway interchange new WSSU.
- The City’s upgraded traffic signal system will help move traffic along more smoothly. Camera’s placed along roads will show traffic, allowing the City to make signal changes to improve traffic flow.



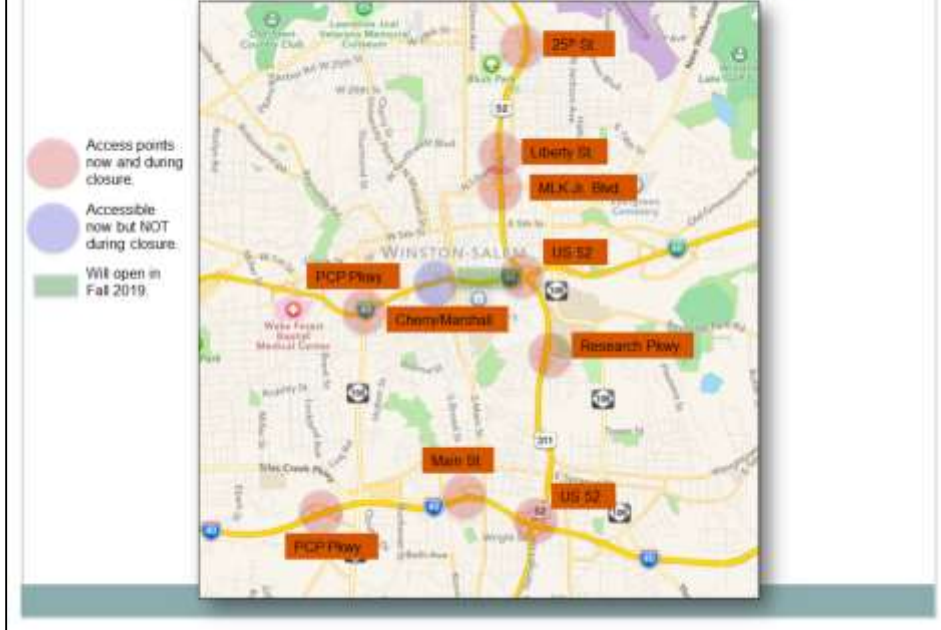
Again, from a broader perspective, the roads highlighted in green are available to use during the closure and provide access into downtown. About 50% of the traffic that typically uses Business 40 **will be directed to use I-40. Many of these drivers will not need to access downtown.**

The remaining 50% will use other roads to travel to downtown, including I-40. Keep in mind that many of these roads will be somewhat congested during the peak hours (approx. 7 -9 a.m. and 4/4:30-6/6:30 p.m.).

EXAMPLES OF POTENTIAL ROUTES:

- I-40 E or W, exit Peters Creek Parkway, travel north to access downtown.
- U.S. 52 from Davidson County heading northbound, exit new Research Parkway, travel north to access downtown.
- U.S. 52 from Mount Airy heading southbound, exit MLK Jr. Blvd into downtown.
- Business 40 from Clemmons heading eastbound, exit Peters Creek Parkway, travel north to access downtown.
- Business 40 from Kernersville heading westbound, exit at U.S. 52, travel north to exit at MLK Jr. Blvd., or travel south to exit at the new Research Parkway. **Or** continue west to Peters Creek Parkway, travel north to access downtown.

Major Access Exits to Downtown



The map above shows some of the major access points along US 52, I-40 and Business 40 now and during the closure. Also remember that in the Fall 2019, the section of Business 40 from Main Street east to US 52 will re-open to traffic. This will be a huge benefit to those working on the east side of downtown and in the WF Innovation Quarter.

New Bridge Designs

- **Incorporate new design features to be visually attractive.**
- **Created through the combined efforts of:**
 - **NCDOT**
 - **Business 40 Bridge & Design Working Group**
 - **City of Winston-Salem**
 - **Creative Corridors Coalition**

Building the Future **BUSINESS 40** 

The bridges within the project will also get a new look. Using a combination of the project’s Bridge and Design Working Group and the Creative Corridor Coalition’s design criteria, the City hired a consultant to create renderings of what the bridges will look like once completed.

Peters Creek Pkwy. Bridge



Building the Future BUSINESS 40



This slide shows a visual rendering of the new Peters Creek Parkway Bridge. Note the arched openings, attractive retaining walls along the north side of Business 40 and transparent noise wall on the bridge. Public art will be placed either on or near the bridge once the project is completed. The art will be created and installed by a non-profit arts association, most likely in coordination with the City of Winston Salem.

Church Street Bridge



Building the Future **BUSINESS 40**



This slide shows a view of Church Street Bridge looking west. You can see Main Street in the background and its ramps in the foreground.

Green St. Pedestrian Bridge



Building the Future BUSINESS 40



This rendering shows the future Green Street Pedestrian Bridge in the daytime, with BB&T Ballpark in the backdrop, while....

Green St. Pedestrian Bridge (at night)



Building the Future **BUSINESS 40**



This rendering shows a view looking down at the lighted overhead arches and path at night time.

Strollway Land Bridge



Building the Future **BUSINESS 40**



The future Strollway Land Bridge is shown here, complete with a 10-foot path and landscaping. You can see the new Liberty Street Bridge in the background.

Managing Incidents during Closure

- Ongoing coordination with City and County services, (Police, Fire, EMS, etc.) to move incidents quickly.
- **Additional message boards to alert drivers.**
- Contract with towing company to ensure quick removal of vehicles.
- **More safety patrol drivers and routes; also pre-stage incident response equipment at specific locations.**
- City's new signalization system will help identify congested areas; signal timing can be monitored and changed immediately.

Building the Future **BUSINESS 40**



In addition to the bridge and roadway aesthetics, NCDOT and other agencies have been planning for the quick removal of incidents on area roadways during the closure. For example, NCDOT will provide additional Safety Patrol routes and drivers, message boards to direct drivers to exits or other roads, and immediate towing to quickly clear an incident. The City of Winston Salem has also installed a new, \$20 million signal system that will be used to monitor traffic and change signals, if needed, to help move traffic more efficiently.

Other Options

- **Transit (www.partnc.org):**
 - **Additional Park and Ride/Shuttle locations**
 - **Dynamic" carpool and vanpool rides**
 - **Employer-based incentives for FREE RIDES**
- **Employers:**
 - **Telecommuting**
 - **4-day, 10-hour/day work week**
 - **Flextime, staggered work hours**
 - **Webinars, conference calls, on-line sharing in lieu of meetings**



Building the Future **BUSINESS 40**



If you don't want to drive your car when Business 40 is closed, try using transit or joining a carpool or vanpool, or perhaps even use a shuttle service from new Park and Ride lots. The Piedmont Authority for Regional Transportation, or PART, has been working with the Winston Salem Transit Authority, NCDOT and the City to ensure that there are other mobility options for people to use instead of their own car. You can find out more about these services at www.partnc.org.

And if you're an employer who has the ability to offer your employees different work options, such as telecommuting from home, working four, 10-hour work days or working staggered hours, please consider doing so to avoid adding more cars to the roads during peak hours of the day. Your help will be appreciated.

Outreach and Communication

- **Social media:**
 - Web site: www.business40nc.com
 - Twitter: @NCDOT_Triad #Biz40NC
- **Email:**
 - business40@business40nc.com
- **Mail:**
 - Business 40 Project, NCDOT - Division 9
375 Silas Creek Pkwy., Winston-Salem, NC 27127



Building the Future **BUSINESS 40** 

NCDOT will continue to provide real time and static information through a variety of venues, including the project website at www.business40nc.com, via Twitter at NCDOT_Triad, #Biz40NC or by email at business40@business40nc.com. You can also mail us your questions or concerns by using the general address shown here.

Outreach and Communication

- **Mobile Navigational Apps.**
 - NCDOT has recently partnered with WAZE.
 - Will be able to make changes daily re. closures, lane changes, etc.
 - Added benefit to those traveling in the area.
- **Presentations like the one today.**
- **Newsletters - on Web Site.**
- **Small Business Liaison - SPECIFICALLY for this project.**
- **Downtown Partnership, Chamber and City – Marketing Campaign to let people know that:**

DOWNTOWN IS OPEN FOR BUSINESS!

Building the Future **BUSINESS 40**



NCDOT has partnered with WAZE, a popular navigational app that shows real time traffic information and updates. NCDOT will be able to make changes daily re. closures, lane changes, etc. due to better interface with WAZE. You can also request our Team to come to your company, business, organization to make a presentations like this.

Other informational tools include project newsletters, which are digital and can be downloaded from the website. A Small Business Liaison has been and will continue to work with small businesses to help them prepare for the closure. And the Downtown Partnership, Chamber and City of Winston Salem are working on a huge Marketing Campaign to let people know that **DOWNTOWN IS OPEN FOR BUSINESS!**



Your Business 40 Team

<p>Pat Ivey, P.E., NCDOT Division 9 Engineer 336-747-7800 pivey@ncdot.gov</p>	<p>Miracle King, NCDOT Communications Officer, Div. 7 & 9 336-487-0157 miracleking@ncdot.gov</p>
<p>Mezak Tucker, NCDOT Div. 9 Resident Engineer 336-249-6255 mtucker@ncdot.gov</p>	<p>Cassandra Herndon, NCDOT Small Business Liaison 336-747-7833 ceherndon@ncdot.gov</p>
<p>Wright Archer, NCDOT Div. 9 Construction Engineer 336-747-7800 warcher@ncdot.gov</p>	<p>Toneq' McCullough, City of Winston-Salem Director of Transportation 336-747-6867 toneqmc@cityofws.org</p>
<p>Jason Mroz, Flatiron Construction Design-Build Contractor jmroz@flatironcorp.com</p>	<p>Karen Simon, Pres., Simon Resources Outreach and Stakeholder Presentations 336-749-1411 simonresrc@gmail.com</p>

Building the Future BUSINESS 40 

You can reach specific Project Team members through their contact information, as shown above.

This concludes the presentation, we hope it was helpful and informative!